

7.2-channel AV receiver supports advanced surround sound formats to make movies come alive.

MusicCast



\*Streaming service availability varies by region.

### Audio Features

- 7-channel powerful surround sound  
80 W per channel (6 ohms, 20 Hz-20 kHz, 0.09 % THD, 2-ch driven)  
115 W per channel (6 ohms, 1 kHz, 0.9 % THD, 1-ch driven)  
145 W per channel (6 ohms, 1 kHz, 10 % THD, 1-ch driven)
- Dolby Atmos® and DTS:X™ support
- Full discrete amp configuration
- Direct Mode for high quality sound reproduction
- Low jitter PLL circuitry helps optimise sound imaging
- Assignable amplifiers for front speaker bi-amp connection
- DSD 2.8 MHz / 5.6 MHz audio playback
- FLAC or WAV 192 kHz / 24-bit audio playback
- Apple® Lossless audio playback
- Compressed Music Enhancer for Bluetooth®

### Video Features

- HDMI® (4 in / 1 out) with HDR Video and BT.2020 pass-through
- 4K video upscaling from HDMI input **NEW**

### Advanced Features

- MusicCast for audio enjoyment in every room
- Bluetooth for wireless music streaming (SBC / AAC)
- Bluetooth Output for Convenient Music Streaming
- Network functions
  - Wi-Fi Built-in (802.11b/g/n)
  - Easy Wi-Fi setup i.e. iOS Wi-Fi settings sharing, WPS etc.
  - Wireless Direct connects a mobile device directly without home network
  - AirPlay® allows music streaming from Mac, PC, iPod®, iPhone®, iPad®
  - AV Controller app for operating various functions from iOS or Android smartphones and tablets
  - Access to: Internet Radio (airable radio): MP3, WMA Streaming Services (Spotify®, Pandora®, Tidal®, Deezer®, Quboz®, JUKE®) **NEW** \*Streaming service availability varies by region.
  - Music files on PC / NAS: WAV, MP3, WMA, AAC, FLAC, Apple Lossless, AIFF, DSD
  - DLNA® 1.5 certified
  - Triggered Auto Playback with MusicCast devices **NEW**
- Gapless playback compatibility allows play without interruption
- Front panel USB Digital Connection for USB thumbdrives
- Multi-language colour OSD capable of displaying cover art (English, German, French, Spanish, Russian, Italian, Japanese and Chinese)
- HDMI CEC with versatile control from AV Receiver remote control
- YPAO™ sound optimisation for automatic speaker setup

- Ability to change HDMI input while in Standby Through mode
- Audio Delay for adjusting Lip-Sync (0-500ms)
- Internet Radio Bookmark
- Video out feature (for TUNER / USB / NET / Bluetooth / AUDIO / AUX input)
- Zone B speaker output provides 2-channel sound in a second room
- SCENE buttons with direct power on (BD/DVD, TV, Net and Radio)
  - Quick and simple to use
  - HDMI CEC powers up compatible TVs and Blu-ray Disc™ players

### Surround Realism

- HD Audio decoding with CINEMA DSP 3D (17 DSP programmes)
- Compressed Music Enhancer with CINEMA DSP
- Virtual CINEMA FRONT provides virtual surround sound with 5 speakers in front
- Dialogue Lift ensures that dialogue comes from the centre of the screen
- Dialogue Level Adjustment for proper sound balance with dialogue and vocals
- Virtual Surround Back Speaker for playing 7.1-channel content with a 5.1-channel system
- Extra Bass enriches the powerful bass sound even with small speakers
- Adaptive DRC (Dynamic Range Control) and Adaptive DSP level
- SILENT CINEMA to enjoy surround sound with headphone
- Two subwoofer outputs (simultaneous outputs)

### Eco-Friendly Design

- ECO mode operation for about 20 %\* less power consumption  
\*Compared to power consumption when ECO mode is off (Yamaha measurement)
- Auto power standby function with variable time setting
- With an advanced energy saving design, This AV receiver achieves a low power consumption of not more than two watts when in Network Standby mode.



The RX-V583 offered with black, titanium and gold finish available in some areas.



### Yamaha Eco-Label

Yamaha Eco-Label is a mark that certifies products of high environmental performance.

### Enter a New World of Sound with Dolby Atmos® and DTS:X™

These sound technologies transport you from an ordinary moment into an extraordinary experience with captivating, multidimensional sound that fills your room with amazing richness and depth. These sound technologies allow for music, people and objects to come alive in breathtaking detail and flow in precise choreography all around you, making you feel like you are right in the middle of the story.



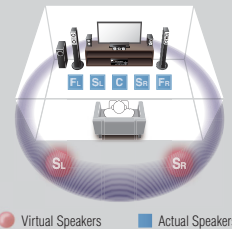
### MusicCast Expands Entertainment Possibilities

MusicCast employs a high performance wireless network to deliver music and audio enjoyment. It can stream digital music content from your smartphone, PC or NAS to other MusicCast devices in your home. It can also share the music from external devices such as a TV or Blu-ray Disc™ player connected to the RX-V583. Audio content from Bluetooth®-connected smartphones or tablets can also be streamed to MusicCast devices in multiple rooms.



### Virtual CINEMA FRONT Provides Virtual 5-channel Surround Sound

Even when it is impossible to install surround speakers behind the listening position. You will enjoy virtual 5-channel surround sound with higher quality and resolution by installing surround speakers at the front. You get more flexibility to arrange your speakers inside the room.

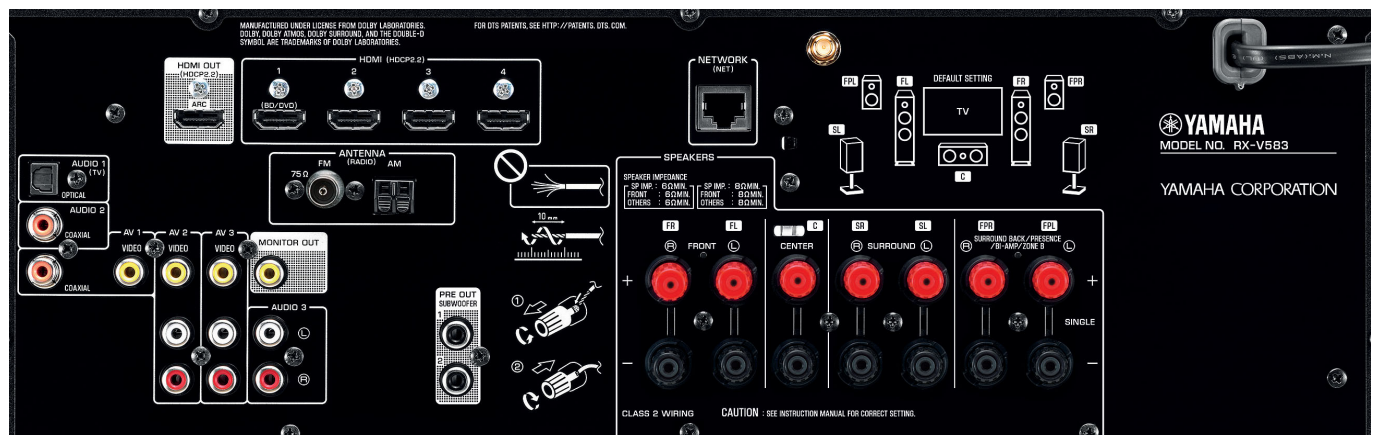


#### Main Specifications

Audio Section	
Rated Output Power (6 ohms, 20 Hz-20 kHz, 0.09 % THD, 2-ch driven)	80 W + 80 W
Rated Output Power (6 ohms, 1 kHz, 0.9 % THD, 1-ch driven [European Model])	115 W + 115 W
Maximum Effective Output Power (6 ohms, 1 kHz, 10 % THD, 1-ch driven, JEITA)	
Front L/R	145 W + 145 W
Centre	145 W
Surround L/R	145 W + 145 W
Surround Back L/R	145 W + 145 W
Dynamic Power/Ch (Front L/R, 6/4/2 ohms)	140 / 170 / 190 W

#### General

Standby Power Consumption	
HDMI Control, Standby Through, Network Standby Off	0.1 W
HDMI Control, Standby Through On, Network Standby Off	1.1 W
Network Standby on	1.8 W (Wireless)
Dimensions (W x H x D)	435 x 161 x 327 mm (with antenna up: 435 x 225.5 x 327 mm)
	17-1/8" x 6-3/8" x 12-7/8" (with antenna up: 17-1/8" x 8-7/8" x 12-7/8")
Weight	8.1 kg; 17.9 lbs.



European Model

#### Extensive Connections

Inputs	
HDMI (Audio Input Assignable, HDCP2.2 compatible)	4
Network (Ethernet / Wi-Fi)	1 / 1
USB*	1
Radio Antenna* (FM / AM)	1 / 1
Optical Digital	1
Coaxial Digital	2
Analogue Audio* (incl. Mini Jack Input)	4
Composite Video (Audio Input Assignable)*	3

\*1 Including front panel terminals.

\*2 The shape of the FM antenna terminal varies according to area.

#### Outputs

HDMI (HDCP2.2 compatible)	1
MONITOR OUT (Composite)	1
Speaker*3/*4 (without subwoofer)	7-ch
Subwoofer	2
Headphone Jack*1	1

\*3 Banana-plug compatible speaker terminals are available in some areas.

\*4 Assignable for surround back L/R to Presence (L/R) or bi-amp (front L/R) or ZONE B

• AirPlay works with iPhone, iPad, and iPod touch with iOS 4.3.3 or later, Mac with OS X Mountain Lion or later, and Mac and PC with iTunes 10.2.2 or later. Supports iOS 7 or later for setup using Wireless Accessory Configuration. "Made for iPod," "Made for iPhone," and "Made for iPad" mean that an electronic accessory has been designed to connect specifically to iPod, iPhone, or iPad, respectively, and has been certified by the developer to meet Apple performance standards. Apple is not responsible for the operation of this device or its compliance with safety and regulatory standards. Please note that the use of this accessory with iPod, iPhone, or iPad may affect wireless performance. AirPlay, iPad, iPhone, iPod, iPod nano, and iPod touch are trademarks of Apple Inc., registered in the U.S. and other countries. • The Bluetooth® word mark and logos are registered trademarks owned by Bluetooth SIG, Inc. and any use of such marks by Yamaha Corporation is under licence. Other trademarks and trade names are those of their respective owners. • The Wi-Fi CERTIFIED logo is a certification mark of the Wi-Fi Alliance. The Wi-Fi Protected Setup Identifier Mark is a mark of the Wi-Fi Alliance. "Wi-Fi," "Wi-Fi Protected Setup," "Wi-Fi Direct" and "Miracast" are marks or registered marks of the Wi-Fi Alliance. • Spotify and Spotify logo are registered trademarks of the Spotify Group. • Pandora and Pandora Internet Radio logo are registered trademarks or trademarks of Pandora Media, Inc. in the United States and/or other countries. • JUKE and JUKE logo are registered trademarks of Media-Saturn-Holding GmbH. • DLNA™ and DLNA CERTIFIED™ are trademarks or registered trademarks of Digital Living Network Alliance. All rights reserved. Unauthorized use is strictly prohibited. • Dolby, Dolby Atmos, Dolby Audio, and the double-D symbol are trademarks of Dolby Laboratories. • For DTS patents, see <http://patents.dts.com>. Manufactured under licence from DTS, Inc. DTS, the Symbol, DTS in combination with the Symbol, and the DTS-X logo are registered trademarks or trademarks of DTS, Inc. in the United States and/or other countries. © DTS, Inc. All Rights Reserved. • HDMI, the HDMI logo and High-Definition Multimedia Interface are trademarks or registered trademarks of HDMI Licensing LLC in the United States and other countries. • CINEMA DSP is a trademark of Yamaha Corporation. • SILENT CINEMA is a trademark of Yamaha Corporation. • Product designs and specifications are subject to change without notice.